

S

Angus K. Gholson Jr. Nature Park - Sunday, May 23, 2010

Meet at 7:45 a.m. at Civic Center in downtown Tallahassee: Carpool caravan will depart for the park promptly at **8:00 a.m.**

Or arrive on your own--

Start time at field trip location: 9:00 a.m. Meet at **Chattahoochee River Landing trailhead.**

This is a new trailhead, so don't go to the usual meeting area for the nature park.

Maps and directions below.

End Time: noon

Degree of Difficulty: Easy **Handicap access:** Yes (about ½ of trip)

Guide:, Leigh Brooks, Water Resource Planner and local conservationist. Contact info: lbrooks2wd@nettally.com, 850-663-4361.

Local Experts: David Clayton and Angus Gholson

Description: This 126-acre city park and RV campground on the Apalachicola River is a jewel rich with historic and biological significance. It spans eastward to the river bluffs, including river floodplain, seepage streams and slope forests. The tri-rivers region is renowned for biological diversity and harbors a number of northern disjunct plants and also some endemics. The park is very popular for its river view and boating access. We will be hiking the nature trails. A new boardwalk through the floodplain is under construction and should be completed in time for our trip. The floodplain showcases some very large trees such as sugarberry, overcup oak, and bald cypress and also some attractive shrubs including Walter's viburnum. Then on to a woodland trail where American beech and Southern magnolia typify the temperate hardwood forest trees. Specialties we might see are the endemic Florida torrey tree and Baldwin's spiny pod (a rare climbing milkweed). Spring wildflowers – phlox, rain lilies, Indian pink - are always delightful. There are picnic tables at the park for lunch.

Park entrance is free

DON'T FORGET: Water and snacks. Long-sleeved shirt and pants are recommended to protect against biting insects, poison ivy, stinging nettles, briars. Wear closed toe shoes. Sunscreen, hat, hiking stick, camera, binoculars optional. The trail is mostly shaded.

Nearest Restrooms: There is a port-o-let at the river landing (maybe the planned bathroom will be constructed by the time of the trip). There is a bathroom at the halfway point on the trail at the park entrance off Morgan Avenue. There is a bathhouse in the campground that may be used before or after the hike.

Nearest gas station: Chattahoochee has two gas stations.

Cell phone reception: Hit and miss in the hills.

Contact number for the day of the event: 850-597-3499

Park Entrance: Chattahoochee River Landing is located at the end of River Landing Road in Chattahoochee, south off US 90 on the east side of the Apalachicola River. From Tallahassee take I-10 west to exit 166. Turn right onto Flat Creek Road and go 1 mile. Turn right (north) on CR 269 and go about 5 miles (name changes to Main Street in Chattahoochee). Turn left (west) on US 90/Washington St. Go ½ mile and turn left at the Hardees onto River Landing Road. Follow down bluff to river, then left a short distance to the new trailhead parking area.

GPS: 84°51'25.264"W; 30°42'0.313"N
-84.857024; 30.700109 Decimal Degrees

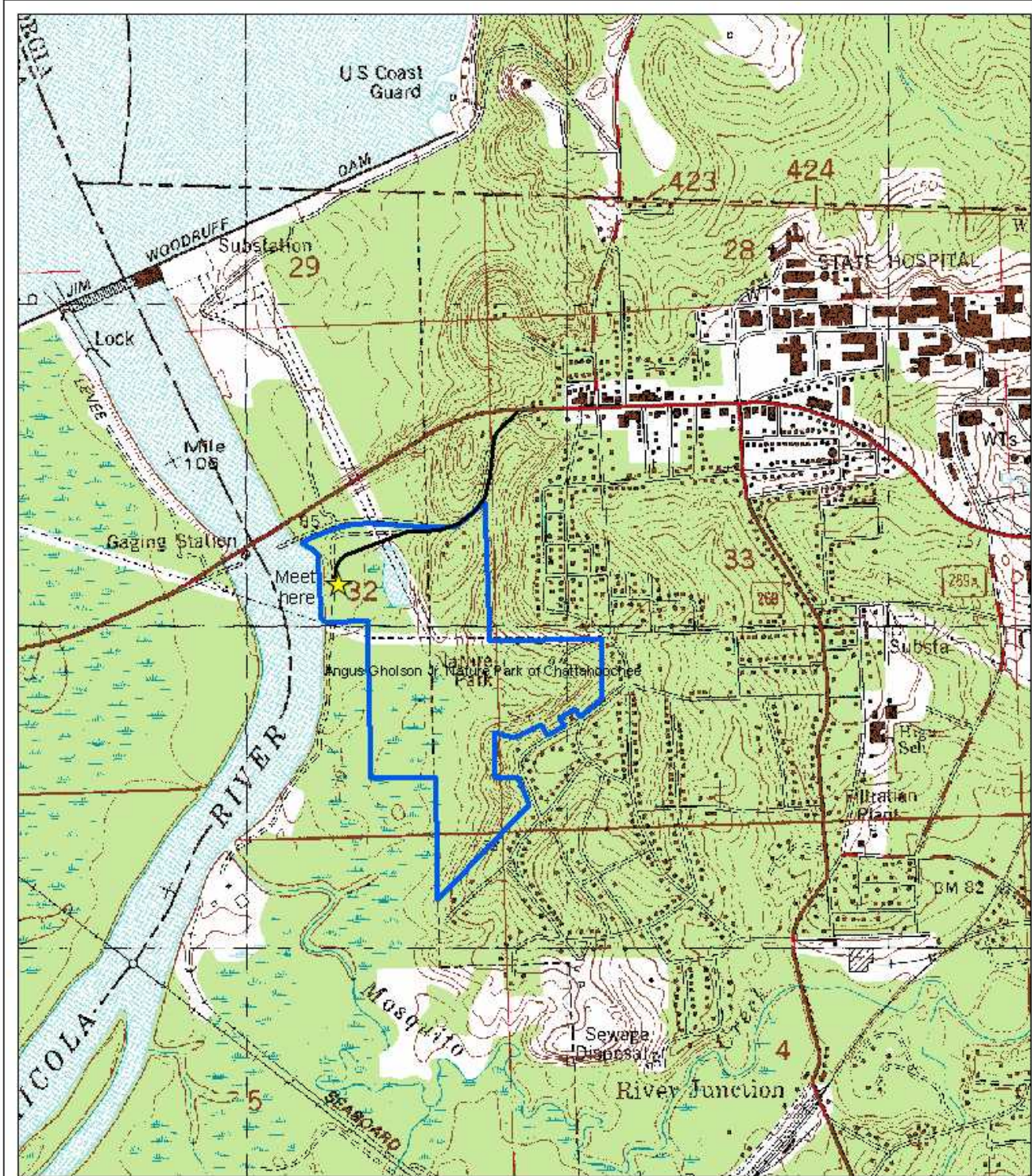
Google Maps:

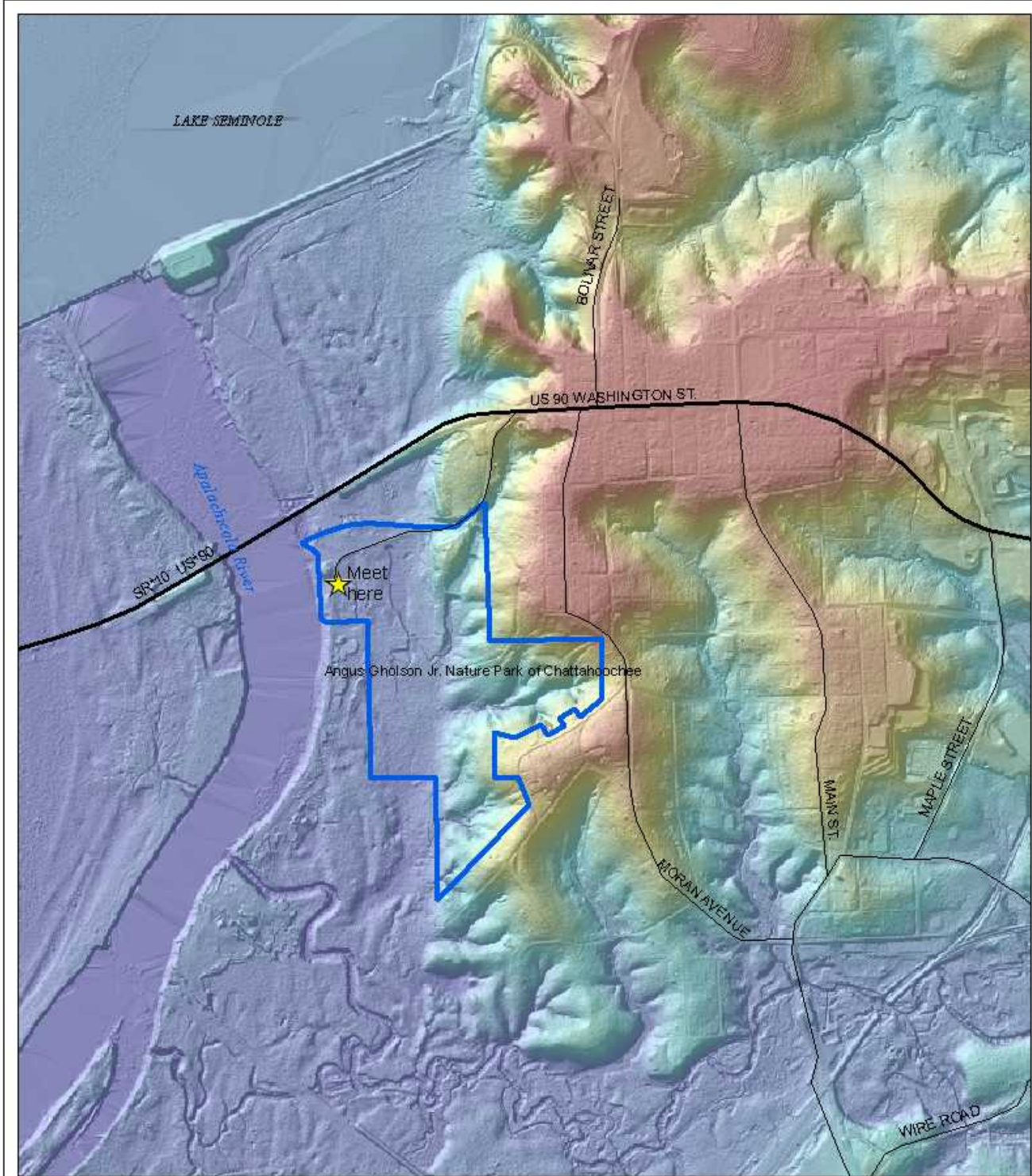
maps.google.com/maps?f=d&source=s_d&saddr=30.482705,-84.309425&daddr=S+River+Landing+Rd&geocode=%3BFUNy1AEd1jDx-g&hl=en&mra=dme&mrcr=0&mrsp=0&sz=14&sll=30.477971,-84.299383&sspn=0.049856,0.053816&ie=UTF8&ll=30.613096,-84.590607&spn=0.796589,0.861053&z=10

Map & info:

www.dca.state.fl.us/fct/parks/index.cfm?fuseaction=search.park&ParkId=549

Other info: www.floridahikes.com/blog/2007/05/01/a-walk-with-angus-gholson/





LIDAR elevation in feet, NAVD88

High: 328.479

Low: 23

0 0.1 0.2 0.3 0.4 0.5 Miles

