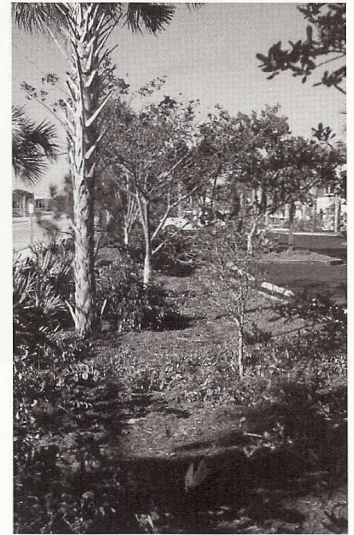


Design with Natives

1998 Program Award Winners

Report by Nadja Chamberlain, 1998 Landscape Awards Committee Chairwoman

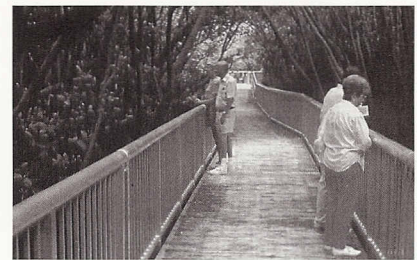
Overall, I want to say that we were all tremendously impressed with the amount of effort, pride, and right-thinking demonstrated by these projects. While they all took a lot more thought than the average project, the long-term benefits to wildlife, to the owners/stewards in less maintenance, and to the water table are evident. The committee members and judges have an enormous admiration for these people and what they have accomplished. We feel fortunate to have gotten to know them in this way.



Institutional, 1st Place, Hypoluxo Town Hall

Richard Moyroud, Mesozoic Landscapes Inc., and Mark Hull, Commissioner, Town of Hypoluxo, designers; General Landscaping Corporation, landscape contractor

To go along with the Old Florida theme of the new town hall, one commissioner suggested using native plants to complement the building and the historic theme. The two-acre site was formerly a small strip shopping center and an abandoned adjacent lot infested with Brazilian pepper. It was decided to restore various plant communities once found in the immediate vicinity. As soon as planting was completed in the spring of 1996, the site began to be used for plant identification classes and to demonstrate the use of native plants in the landscape. While wandering around on this now lush property, one forgets that US 1 is right alongside. Truly a lovely restoration.



Institutional, 2nd Place, Downtown Mangrove Nature Park, Boynton Beach

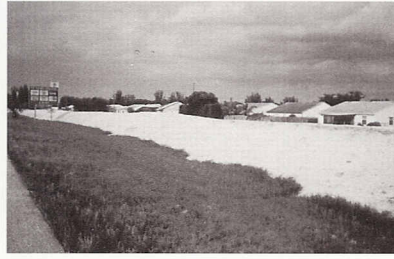
Ryce Stallings, AIA, and David Sacks, ASLA; Wallace, Roberts & Todd, landscape architects; Rood Landscape Company, Inc., landscape contractor

This project was chosen for its innovative use of material for a boardwalk through a mangrove area. Aluminum was chosen for its durability and appropriateness to the coastal environment. Pre-fabrication allowed assembly on-site to proceed with virtually no destruction to site resources other than minor trimming of mangrove branches.

continued on page 13

Design with Natives, 1998 Program Award Winners

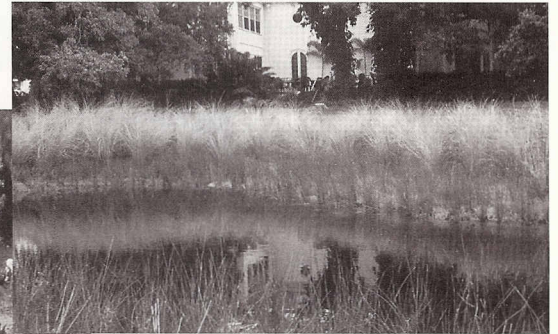
continued from page 7



Institutional, 3rd Place, Florida Turnpike Australian Pine Tree Removal and Native Plant Re-landscaping

Kim Moyer and Bruce Mantell, Turnpike District, Florida Department of Transportation, landscape architects; Phoenix-Hayes, Reed Landscaping, and O'Brien Landscaping, landscape contractors

This truly notable project included dense native plantings on berms to buffer the sights and sounds of the highway, plus the removal of truly enormous Australian pines.



Institutional/Educational, 1st Place, Selby Gardens Shoreline Restoration

Annemarie Post, Director of Horticulture, Selby Gardens; Allen Burdett, Florida Department of Environmental Protection; and Chris Fusca, designers; Selby Gardens Horticulture Department (installation and maintenance)

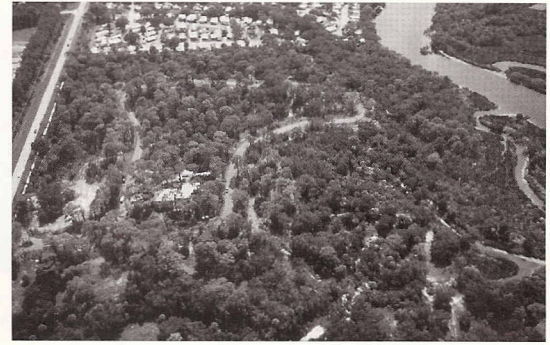
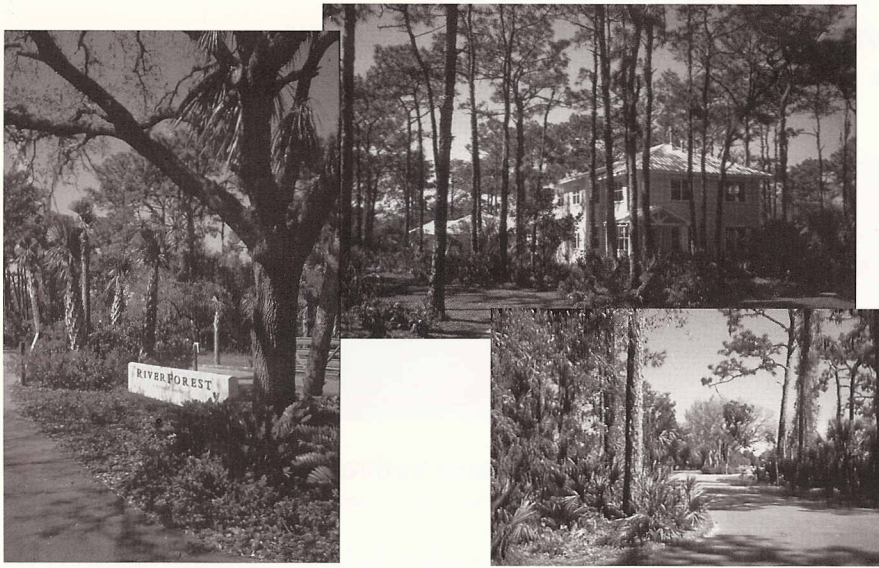
This project addresses the needs of protecting coastal zone natural resources, wildlife habitats, shoreline species, and freshwater resources. It is a great tool to educate schoolchildren and adults about the importance of these environmental issues. One hundred feet of shoreline was restored and a lagoon created with a marsh. The Selby Foundation, the Florida Department of Environmental Protection, the Sarasota Bay National Estuary Program, and Marie Selby Botanical Gardens all provided funding for this project, with the Selby Foundation providing half of the cost.



Institutional/Educational, 2nd Place, Florida House Learning Center, Sarasota

Volunteer design, installation, and maintenance

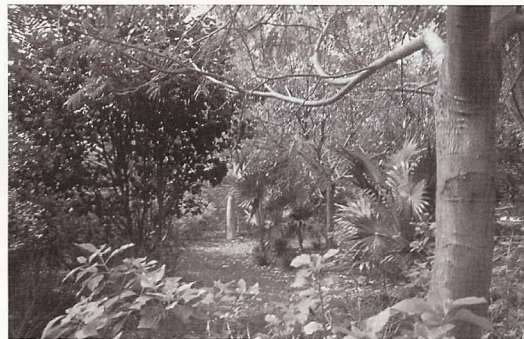
The Florida House Learning Center is an off-the-shelf showcase for resource conservation technology built and operated as a result of a unique public/private partnership between the Sarasota County Cooperative Extension Service and the Florida House Foundation. The grounds feature native and edible plants and they emphasize Environmental Landscape Management – safest pest control alternatives, slow release fertilizers, recycled mulch, and drought tolerant native plants. There are two cisterns which collect water for outdoor watering and indoor non-potable use. Irrigation is with drip and microspray techniques.



Professional Commercial, 1st Place, River Forest, Bradenton

Joseph T. King, Architect and Vice President, River Forest/King Ranch-Manatee, Inc.; Allen Garner, Landscape Architect

The developer of this community grew up on the property adjoining this land and when he knew the property would soon be developed, stepped in to develop it in a way that would let it continue to function as an ecosystem, as he couldn't bear to see it destroyed. He has proved that it is not necessary to destroy something to develop it and has also proved that one can still make money with the "right kind" of development. River Forest has been certified through the Florida Yards and Neighborhoods Program and the Manatee County Cooperative Extension Service has conducted field trips to showcase the development's environmentally friendly approach to landscaping.



Professional Residential, 1st Place, Sachs Residence, Tavernier

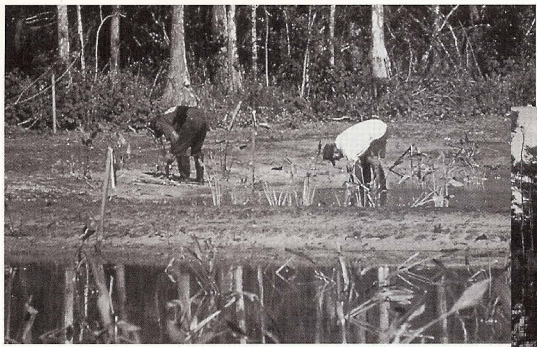
Steven Crebbin, Brown & Crebbin Design Studio Inc., designer; Melrose Nursery, landscape contractor

This residence on lower Matecumbe Key was designed to use native plants that would attract many species of birds, butterflies, and animals to the garden and help animals that were displaced during the development of surrounding properties. The challenge was to develop a low maintenance, low water use, self-sustaining landscape that would survive the harsh, ocean front environment while providing both function and aesthetics to the property.



Non-Professional Residential, 1st Place, Almada/Avery, Vero Beach

This house in the Sebastian area was carefully sited to maintain the existing coastal hammock and dune areas. The new owner hopes this award will serve to educate potential neighbors of untouched surrounding land to treat their properties as carefully.



Professional Restoration, 1st Place, Cocohatchee Strand Restoration

Clay Carithers, Wilson, Miller, Barton & Peek, Inc., designer; Nautilus Environmental Services, Inc., Landscape Contractor

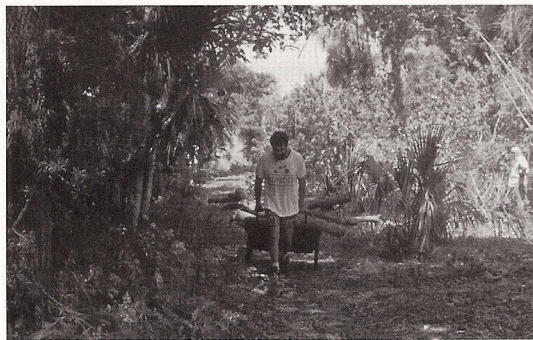
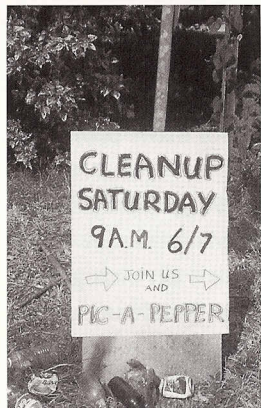
Part of the 2,075-acre Pelican Marsh Community development, this was an enormous effort: clearing exotics, grading, replanting with native trees, shrubs, and herbaceous species; over 15 acres of native forests, ten acres of native marshes, and two acres of hammocks were recreated for a 133-acre forested wetland system with a diversity of vegetation and habitats.



Professional Restoration, 2nd Place, Beachview Golfclub

Richard Workman, Coastplan Inc., design and installation

While hundreds and thousands of acres of Florida are being turned into golf courses landscaped with non-natives requiring untold amounts of pesticides, fertilizers, and herbicides, this golf course on Sanibel Island is now a horse of another color. Originally a dredged and filled golfcourse subdivision that had become monocultures of Brazilian pepper and Australian pine, in 1988, Mr. Harold Lagg, the new owner, had the project redesigned to restore the Sanibel River and create about 15 acres of riparian wetlands. The project was modeled on existing, undisturbed Sanibel interior wetland marshes.



Community Restoration, 1st Place, Indian Beach Sapphire Shores 40th St. Bay Access

Indian Beach Sapphire Shores Neighborhood Association

The judges were very impressed with the energy that was put into this community effort to fight back some ferocious exotics and get this access to the bay back into a native ecosystem.

continued on page 23


Design with Natives, 1998 Program Award Winners

continued from page 15



Community Restoration, 2nd Place, Beach Access, Atlantic Beach

James Loper, Reflections of Nature, designer; residents of the 13th St. neighborhood (installation and maintenance)

While newly installed and in its infancy, the judges wanted to award this community effort that not only involved a lot of people but required those who spearheaded the effort to do a great deal of environmental education in the neighborhood – to get everyone to accept the idea of native plantings in their beach accessway rather than GRASS. 



1998 Design with Natives Landscape Awards Program Committee

Left to right: Bill Bissett, Nancy Bissett, Robert Hopper, Dorie Faulkner, Nadja Chamberlain, Sharon Heal-Eichler, and Ray Miller