

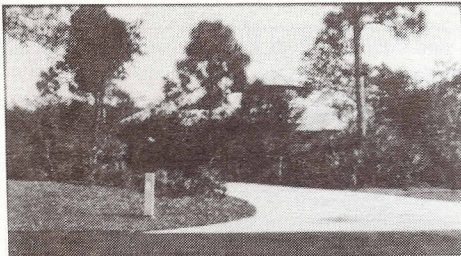
# FNPS 1993 LANDSCAPE ENHANCEMENT AWARDS

by Pat Chellman, Landscape Committee

Since the first Landscape Enhancement Awards were presented in 1989, we have seen lots of diversity and creativity in the entries. Each one approached the use of native plants in the landscape site differently, yet all demonstrated the variety and versatility you can achieve with natives.

The entries in residential, commercial, and chapter categories were judged on compatibility of plant species to site ecosystem, preservation or creation of habitat, completeness of restoration, and the creative solution of conflicts between environmental constraints and human habitation.

## OVERALL WINNER AND ALSO FIRST PLACE RESIDENTIAL



Palm City is the location of Mr. and Mrs. Joseph K. Gordon's residence, designed by Tom Mumford, ASLA, Martin County Chapter FNPS member of Stuart. This 3/4-acre site in Harbour Ridge golf community is separated from the St. Lucie River by approximately 50 feet of preservation area. The last undeveloped lot on this street is a mix of scrub and high pines communities. The Gordons and Tom wanted to save as much natural habitat as possible and used a tree spade to transplant scrub oaks and palmettos from the building area to sparsely vegetated spots on the lot.

By utilizing existing vegetation, this plan gives the owners privacy from the street and neighbors. Additional native plants were added to plug holes naturally existing or created by contractor, utility people, etc. The Gordons plan to encourage volunteer natives which will give them, in time, a look that the area had never been disturbed.

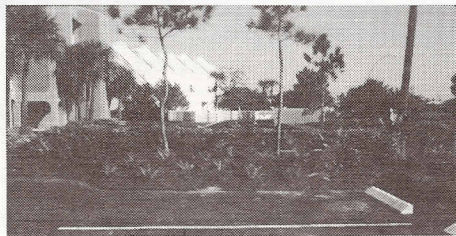
## RESIDENTIAL

Second place residential winner was Ingrid Jimrusti of Davie, whose home borders a small lake. Starting in 1989, her project involved reducing the size of her lawn and creating a wetland and transitional area to attract wading birds and other wetland wildlife. Ingrid says, "Our native landscape has attracted the attention of some of our neighbors who are planting their lakeshore in the same

fashion. Others get their plantings by natural recruitment and are not mowing them down. The man-made lake and its surroundings are slowly gaining a native appearance."

## COMMERCIAL

First place in this category went to Flamingo Bay Condominiums, de-



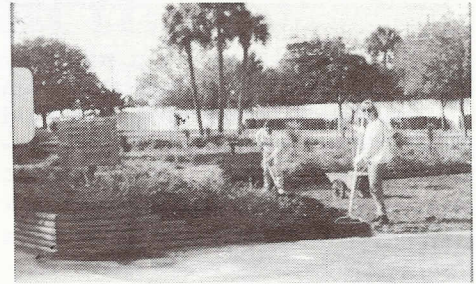
signed and installed in January, 1993, by Dan Argeau of The Ground Works. Flamingo Bay is located on the Intracoastal Waterway south of St. Petersburg. The owners were looking for a different, pleasing, and low-maintenance landscape that would consume less city water. Eighty-five percent of the existing vegetation was removed and replaced with native species.

Second place was awarded to Phillip R. Jimrusti & Associates for Windward Lakes residential development in Pompano Beach. In developing this site, three areas of wetland forest were preserved. Four other areas were established to complement the preserve areas and to attempt to restore the wetlands that could not be saved. Species indigenous to the site were used. Brazilian pepper, which was covering the bank of a canal, was removed and the bank was replanted with transitional and aquatic plants.

## CHAPTER

Pinellas Chapter received the Chapter Landscape Award for its project at the SouthTrust Bank branch office in St. Petersburg. In January, 1991, bank officers and FNPS members met to discuss replacing the problem-prone

St. Augustine grass island near the drive-through teller area. Pinellas Chapter planned to make this highly visible area of the bank's property into a demonstration of the usefulness of native flora. The planting was done in March/April and has been maintained by the Chapter. The irri-

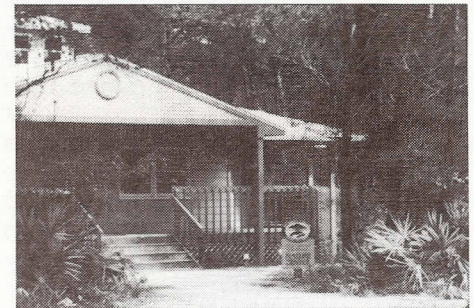


gation zone that covered this area has been turned off.

The area is essentially an informal meadow of wildflowers and native grasses with an overstory of longleaf pine and a few summer haws. Colors change through the seasons and provide reliable nectar sources for local butterflies. Simpson's stopper was added for songbirds.

Comments from bank patrons, such as "It's so alive with butterflies!" and "I actually saw quail out here one day!" (and this is in downtown St. Petersburg!) give positive feedback. This successful project also received a special merit award from the Pinellas Economic Development Council.

Second place went to Conradina Chapter for the Margaret Hames



Nature Center in Palm Bay. The nature center is located in a sand pine scrub community and Conradina Chapter member Margaret Hames, for whom the center is named, was consulted on the site plan and preservation options. The Florida cracker-style structure was built off the ground and none of the existing plant community beyond fifteen feet of the building was disturbed. As a result, none of the surrounding sand pines was lost. Landscaping material was limited to plants that naturally occur in a sand pine scrub community and no species not already present were introduced.